

# RC1 Rigid Coupling

-T&G DESIGN-

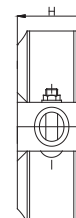
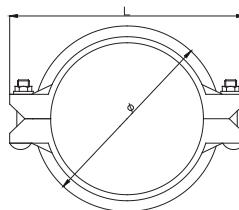


Industrias Especializadas Oliva  
<https://ieso.com.mx/tienda/>  
 (686) 568-9002

The Model **RC1** is a T&G (tongue & groove) design coupling for moderate pressure applications where rigidity is required including valve connections, mechanical rooms, fire mains and long straight runs. The built-in teeth and T&G mechanism firmly grasp the pipe ends to eliminate undesired flex. Support and hanging requirements correspond to ANSI B31.1, B31.9 and NFPA 13.

Pressure rating 300PSI / 2.07MPa

UL Listed & FM Approved



**Surfas Finish**  
 Painted orange paint.  
 Hot dip galvanized.  
 Epoxy RAL3000 red.



"C" Style Gasket

Model RC1 Rigid Coupling (T&G DESIGN)						
Nominal Size mm/in	Pipe O.D mm/in	No.-Size mm	Dimensions mm/in			Weight Kg
			Ø	L	H	
25	33.7	2-M10*45	55.6	98	44	0.5
1	1.315	3/8×1-4/5	2.188	3.858	1.732	
32	42.4	2-M10*45	66	107	44	0.6
1 1/4	1.660	3/8×1-4/5	2.598	4.213	1.732	
40	48.3	2-M10*45	74	115	44	0.6
1 1/2	1.9	3/8×1-4/5	2.913	4.527	1.732	
50	60.3	2-M10*55	84	124	44	0.7
2	2.375	3/8×2-1/8	3.307	4.882	1.732	
65	73	2-M10*55	98	138	45	0.8
2 1/2	2.875	3/8×2-1/8	3.858	5.433	1.772	
76.1	76.1	2-M10*55	100	143	45	0.9
3OD	3	3/8×2-1/8	3.937	5.63	1.772	
80	88.9	2-M10*55	114	157	45	1.0
3	3.5	3/8×2-1/8	4.488	6.181	1.772	
100	114.3	2-M10*65	140	187	50	1.4
4	4.5	3/8×2-3/5	5.512	7.362	1.889	
139.7	139.7	2-M12*70	172	220	50	1.7
5	5.5	1/2×2-3/4	6.771	8.661	1.889	
125	141.3	2-M12*70	172	220	50	1.8
5	5.563	1/2×2-3/4	6.771	8.661	1.889	
150	165.1	2-M12*75	197	252	51	2.2
6-1/2OD	6.5	1/2×3	7.756	9.921	2.008	
150	168.3	2-M12*75	197	255	51	2.3
6	6.625	1/2×3	7.756	10.039	2.008	
200	219.1	2-M16*100	254	330	58	4.5
8	8.625	5/8×4	10	12.992	2.283	
250	273	M20*110	315	398	62	5.7
10	10.750	3/4×4-5/8	12.4	15.669	2.441	
300	323.9	M20*120	371	454	64	8.0
12	12.750	3/4×4-4/5	14.61	17.874	2.441	